

FOR LEASE

Office/Storage Building
Satsuma, Alabama



Adam J. Metcalfe, SIOR

Post Office Box 2903, Mobile, AL 36652

(P) 251-432-2600 (C) 251-610-0069

adam@metcalfec.com www.metcalfec.com

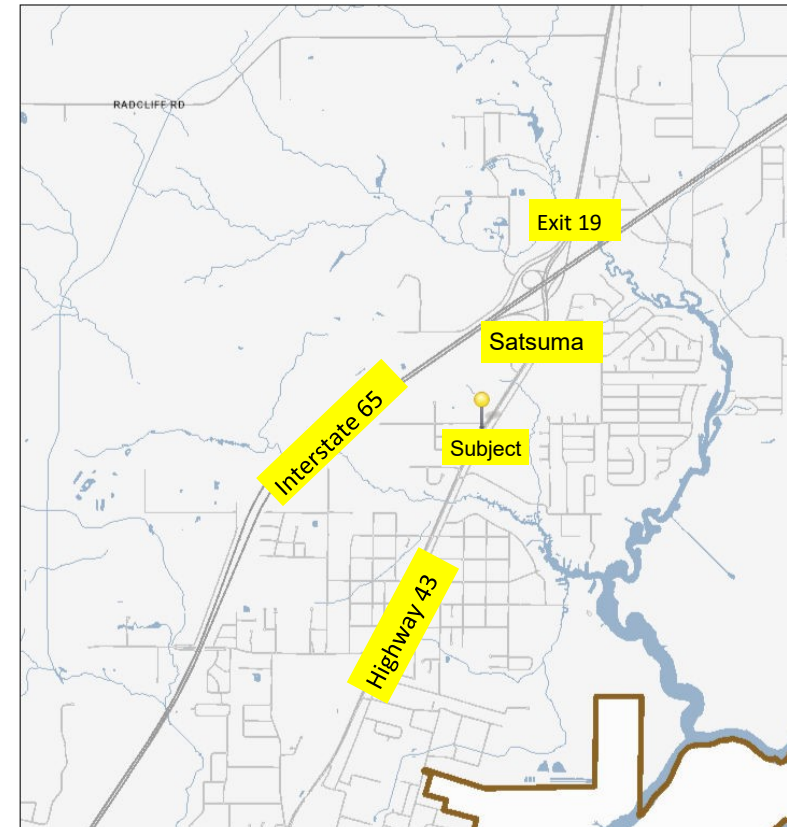


Location: 5859 Highway 43
Satsuma, Alabama
Corner of Baldwin Road and
Highway 43
.8 miles south of Interstate 65
At Exit 19

Building: 5,700± square feet total
3,100± square feet office
2,500± square feet

Land Area: .62± acre

Rent: \$3,300 per month



The information provided for by the company is subject to errors, omissions, changes, prior sale or lease and withdrawal from the market without notice by the owner. This information has been gathered from sources that are deemed to be reliable, however there is no warranty or guarantee to its accuracy or validity. You are hereby advised to independently verify the information presented herein.